



Jun/Jul 2023

HV JUICE

TE PORCELAIN INSULATORS

PROVEN QUALITY, IN STOCK

25 YEAR WARRANTY

OUR PORCELAIN RANGE OFFERS

Extensive stock holdings

Guaranteed availability*

20+ years & 100,000+
in service in NZ

Great price

Extensive range



Terms and conditions apply. To learn more about this offer contact us.

FULL RANGE OF
INSULATORS &
ACCESSORIES
READY TO SHIP



AUTHORISED DISTRIBUTOR





WHY YOU SHOULD CHOOSE TE!



AUTHORISED DISTRIBUTOR

- All TE Connectivity porcelain insulators come with a **25 year warranty**
- We have excellent stock holding in our Auckland warehouse
- We can hold inventory for your usage requirements (talk to us now)
- TE Insulators have a long service history with more than 150 years selling to Australia and New Zealand
- TE Insulators meet all relevant international standards



- The full and comprehensive range includes:
 - **VOLTAGES** – low, medium, & high
 - **MATERIALS** – Porcelain, Polymer (including silicone & EVA), & Glass
 - **STYLES** – Pin, post, strain/termination, spool, shackle, guy strain, & disc



Call your local TransNet representative or email sales@transnet.co.nz for pricing, availability, and technical data.



11kV Porcelain Posts - Auckland



33kV Polymer Posts - Taranaki



66kV Polymer Posts - Southland

INSULATORS, PINS, STRAPS, & MORE EVERYTHING YOU NEED WHERE YOU NEED IT



WHAT MAKES OUR PRODUCTS BETTER...

FAST & SIMPLE INSTALLATION WITH NO SPECIAL TOOLS REQUIRED

With many decades of experience with Helical fittings and how they work we're able to offer training to ensure correct installation to the requirements of AS1154 for all fittings including Distribution Ties and Armour Grip.

ROBUST INFORMATIVE LABELS

We have introduced a water resistant label with an aggressive adhesive which holds it in place until you're ready for it to be removed. Our labels show clearly the descriptive part number, a list of the conductor names/sizes the fitting is designed for use on, a description of what it is, a barcode, and the colour of the paint that is on the fitting for visual size reference.

DESCRIPTIVE PART NUMBERS

Our Part Numbers refer to the conductor range the fitting is designed to be used with. The prefix outlines the type of fitting and the numbers show the OD of the cable they'll fit.

DURABLE BOXES

Boxes are often left on the back of trucks and they also get wet on site. Wherever your stock is, it needs to be in a box that stays together longer. We added a water-repellent coating to our Helical fitting boxes for precisely this reason. These boxes are harder wearing than others you might come across while remaining recyclable cardboard.

BUY ONLY WHAT YOU NEED

If you don't need a full box quantity to get your job done simply order the amount you need. If it's for a specific project and you need to minimise waste you can order in minimums of one unit (unless the fittings are special order where MOQ's will apply).

Water resistant box with descriptive code, conductor size/name and colour for fast, simple identification.



TE'S RAYSULATE - WILDLIFE & ASSET PROTECTION



“Damage to electrical substations could be eliminated and a reduction in outages achieved by proactively applying TE's Wildlife & Asset Protection products.”

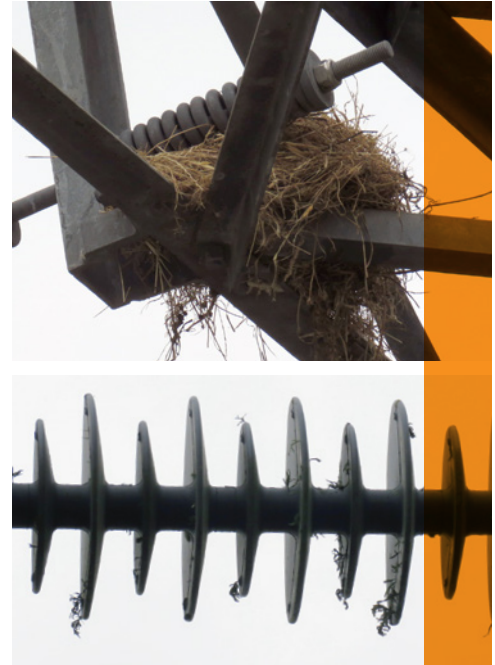


Wildlife infiltrating substations and causing flashovers is a constant problem for asset owners. A quick, easy, and reliable solution is the extensive Raychem range of asset protection products, including standard and custom formed products. Talk to your local rep about what might be available for your unique application. We have capacity to design and manufacture custom solutions right here in New Zealand from trusted Raychem Raysulate products.

TE'S RAYCHEM RAYSULATE

- Customised solutions for all substation applications
- Vacuum formed in New Zealand to fit individual requirements
- TE's Raysulate HVIS is compatible with all other products in the Raychem MV insulation enhancement system enabling all problematic areas to be covered using a combination of standard and custom formed products
- Excellent tracking & erosion resistant properties
- Manufactured from a non-halogen based material, noxious and corrosive effects are greatly reduced in the event of a fire
- Excellent UV and weather resistant properties make Raysulate products suitable for indoor and outdoor use
- Can be stored indefinitely at temperatures up to 50°C without loss of performance
- Easy to install on site

Raysulate Vacuum Forming Plant



CUSTOM SOLUTIONS

- We work with your engineers to determine what is required
- From your drawings we have custom forms made to exacting dimensions
- We can assist with installation training
- All custom Raysulate solutions are produced in New Zealand



“TE estimates that damage to electrical substations could be **reduced by as much as 80%** simply by applying insulation”.





WHEN YOU CAN PREVENT BUSHFIRES BEFORE THEY START



The strategic installation of insulating components and barriers can be used to minimise the impact of wildlife on power grid assets. If these components are specified correctly, such modifications can minimise costly power outages while reducing fire risk and safeguarding assets and the environment for 40 years or more.

THE COST OF FIRES

Improved fire safety and operating reliability helps utility owners avoid the catastrophic implications of wildlife-related fires, including:

- Injuries and loss of life to personnel
- Damage to (and loss of) power grid assets
- Service interruptions and power outages
- Environmental hazards and danger
- Damage to agricultural and horticultural assets
- Regulatory penalties and litigation
- Reputational damage and damage to shareholder value

For most utilities, the ability to avoid even one potential outage can help to underwrite the costs to upgrade the system with appropriate protections.

WILDLIFE MANAGEMENT

Localised fires caused by animals such as birds or possums infiltrating your overhead lines and substations are often the result of electrocution. They fall to the ground below and spark a fire. We can help you prevent animal induced wildfires and bushfires with our wide selection of insulating wildlife mitigation solutions, including bushing covers, cross arm guards and more. Each is manufactured from our unique Raychem polymer material. It's specially formulated to resist tracking, UV degradation and thermal extremes. We are committed to protecting your network for the life of your assets and reducing the risks of wildfire and bushfires with 60+ years of manufacturing and design experience.

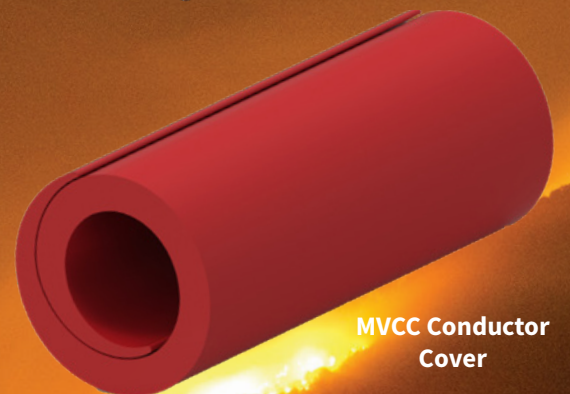
VEGETATION MANAGEMENT

The equation is simple. Fuel + Source of Ignition = Fire. Vegetation can act as a fuel to a fire when combined with an ignition source. A vegetation management program is therefore essential to reducing the risk of wildfires and bushfires. We can help you prevent vegetation clashing with conductors and overhead lines while reducing the frequency and expense of trimming and debris removal with reliable safeguards such as overhead line covers and insulators.

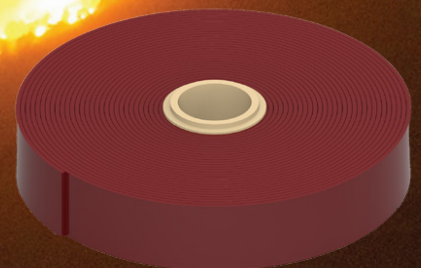
Trust TE Connectivity's proven track record of experience in the field, broad expertise in electrical and mechanical component design, fully integrated compounding, supply-chain integration, testing and installation, and materials science expertise.



MVLC Line Cover



MVCC Conductor Cover



High Voltage Busbar Tape



TransNet e-Mobility has a complete range of components – from power distribution/energy management to all electrical drawings/installation instructions – to take any project from the planning stage to EV ready and eventually a fully commissioned EV charging network.

EV CHARGER PEDESTAL PIT

FUTUREPROOF LOCATIONS FOR EASY INSTALLATION



INTERNAL ADJUSTMENT PLATE

FEATURES

- Internal adjustment plate allows for 360° rotation after the concrete is set
- Adjustable mounting studs allow for up to 10 degree slope of ground – level quickly & without fuss
- Each EV Pedestal Pit can be used with single/double or quad charger pedestals
- EV Pedestal pits are the perfect placeholder to be EV ready so no invasive earthworks are required to install EV chargers later
- Safe for pedestrians while not in use
- Allows for future installations without messy reinstatement of pavements
- Fast and easy for electrician to install and terminate pedestal and chargers
- Lockable lid for security
- Easily reinstate lid if moving - take your chargers and pedestals with you
- Mounting bolts screw into the pedestal pit, so no risk of damaging concrete

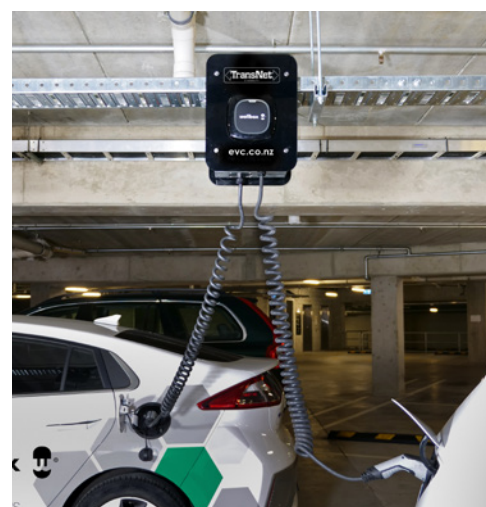


EV CHARGER CABLE TRAY MOUNT

FOR FLEXIBLE INSTALLATION AND TIGHT SPACES

CABLE TRAY FEATURES

- Fast and simple to install & easily moved
- Back to back mounting options
- Power supply is easily installed
- Utilise the same cable tray used for supply cables to mount the charging station
- Suitable from 2.2 up to 3.5 metre heights with adjustable mounting height for the tethered EV charge cable when not in use
- Supplied with power cable pre-wired to a local isolator & 4 metres of power sharing cable for quick and easy installation
- No need to install conduit
- No need for space at ground level
- Cable tray mounted solutions include Wallbox charge stations (sold separately)
- Enables easy power sharing and load management set up





RUG UP IN STYLE

ATPV **4.2cal/cm²** Arc Rated Merino
Base Layers - **Available Now**



These superior quality garments are designed for the workplace and offer ultimate comfort and durability. Merino wool provides natural warmth, breathability, and temperature regulation, and is blended with FR treated Viscose.

Features

- High quality 50% Merino Wool / 50% FR treated Viscose fabric sewn with FR thread
- ATPV 4.2cal/cm² Arc Rating
- Size options from s-3XL
- Durable material
- HRC1 labels are sewn into each garment
- Machine washable & quick drying



Compliance & Standards

AS/NZS 1906.4:2010

Hi Visibility material for Safety Garments

- Class D: Daytime use

Durability

- AS 2001.4.15:1994 - Determination of Colourfastness to Washing
- AS 2001.4.E04:2005 - Determination of Colourfastness to Perspiration
- AS 2001.4.B02-2001 - Colourfastness after UV Exposure (Dry)

ASTM F1506-18

Garments for Electrical Safety in the Workplace

- ASTM F1959/ F1959M-14
Arc Rating: ATPV 4.2cal/cm²
- NFPA70E
CAT1: HRC1/
PPE1
- ASTM6413/ 6413M-15
Vertical
Flame Test



BMFR821
Men's long sleeve
crew



BMFR822
Men's Long Johns



BMFR866
Men's Boxers



BMFRBEAN84
Skull Beanie



BMFRNECK85
Neck Warmer



BMFRBALA82
Balaclava



BMFR823
Men's short
sleeve V



ARC RATED RAINGEAR

SUITABLE FOR
INFRASTRUCTURE &
ROADING, OIL & GAS,
MINING, & UTILITIES

**PREPARE
FOR
WINTER**

29CAL INHERATEX BIB TROUSER

12017NT / COLOUR: Navy / SIZES: XS-4XL, 6XL, 8XL

FEATURES

- Arc Rated / Inherent FR / Antistatic
- Elasticated waist
- FR cotton lining
- Covered elastic shoulder straps
- Zipped gusset with velcro tabs at bottom outer leg
- Front chest pocket
- Completely seam sealed
- Segmented FR Ultra-Flect retro-reflective tape
- Arc rating: ATPV = 29Cal/cm²
- PPE Category Level 3 in accordance with NFPA 70E

STANDARDS

ISO11612:2015 Class A1 B1 C1 FI. ISO 11611:2015 Class 1. A1, ISO14116 Index 3/5H/40. ASTM F1959/F1959M-14E1, 61482-1-2:2014, EN1149-5:2008. Water Resistance H2O:16,000+mm. Breathability: 4,000g/m2/24hr.

FABRIC

300D Poly Oxford, anti-static carbon grid, with Modacrylic liner, and FR cotton lining.



16CAL TTMC-W17 SOFTSHELL JACKET

FEATURES

- Arc Rated / Inherent FR / Antistatic
- Large Front Pockets
- Segmented FR reflective tape
- Long tail design for extra coverage
- ATPV 16cal/cm²

STANDARDS

TTMC-W17 (CoPTTM). AS/NZS 4602.1:2011 + AMDT 2:2020 Class DN.

AS/NZS 1906.4:2010 Class F.

ISO11612:2015. A1, B1, C1. ISO 11611 Class 2. ISO 14116 Index 3/5I/40. EN1149-3:2008. EC 61482 -1-1:2019.

FABRIC

360gsm Inherent Modacrylic blend inner and Poly outer.



29CAL TTMC-W17 X-TAPE INHERATEX JACKET

12017NT / COLOUR: Navy / SIZES: XS-4XL, 6XL, 8XL

FEATURES

- Arc Rated / Inherent FR / Antistatic
- Elasticated waist
- FR cotton lining
- Covered elastic shoulder straps
- Zipped gusset with velcro tabs at bottom outer leg
- Front chest pocket
- Completely seam sealed
- Segmented FR Ultra-Flect retro-reflective tape
- Arc rating: ATPV = 29Cal/cm²
- PPE Category Level 3 in accordance with NFPA 70E

STANDARDS

ISO11612:2015 Class A1 B1 C1 FI. ISO 11611:2015 Class 1. A1, ISO14116 Index 3/5H/40. ASTM F1959/F1959M-14E1, 61482-1-2:2014, EN1149-5:2008. Water Resistance H2O:16,000+mm. Breathability: 4,000g/m2/24hr.

FABRIC

300D Poly Oxford, anti-static carbon grid, with Modacrylic liner, and FR cotton lining.





GAS TORCH SETS BY TE CONNECTIVITY

TE's Raychem gas torch sets allow you to install Heatshrink products correctly using specialised tools approved by TE. These sets are available in both a standard and Piezo (self igniting) style handle.

STANDARD

Featuring a Sievert plastic composite single valve handle with high quality brass metal parts, this set is suitable for rapid installation of heat-shrinkable materials. It offers maximum burning efficiency and the best available balance of surface pre-heat.

Contents:

- FH-1630-S-HNZ handle
 - Spindle and valve give very exact & quick flame setting
 - Springloaded metal knob gives precise and stable setting for finest of flames
 - All metal parts made of high quality brass
- 5m long high pressure hose
 - Screw connections for regulator & handles
 - Connection threads: R 3/8", left
 - Internal diameter 4mm
- BN38 38mm nozzle
 - Flame diameter 38mm
 - Gas consumption 0.90kg/h



PROMATIC

Featuring the patented Piezo electric ignition, universal handle, advanced design, and ergonomic appearance, the Promatic is a world-beating system for all possible heating tasks where efficiency and professional workmanship are the most important requirements.

Contents:

- Piezo handle
 - Operates with propane and butane gases
 - Gas flow when trigger pressed only
 - Nozzle connection: bayonet socket
- 5m long high pressure hose
 - Screw connections for regulator & handles
 - Connection threads: R 3/8", left
 - Internal diameter 4mm
- BN38 PIE 38mm nozzle
 - Flame diameter 38mm
 - Gas consumption 0.90kg/h



CABLE TIE TENSIONING TOOL

FEATURES

- Manual cut off
- Suitable for all Stainless Steel cable ties
- Length: 210mm
- Weight: 570g



CAT NO. #116/1



AUTHORISED DISTRIBUTOR



rayTEC



SPX-WL168
Zone 1/21

SPX-WL84
Zone 1/21



SPARTAN LINEAR

HAZARDOUS AREA LUMINAIRE ZONES 1/21 - 2/22

The SPARTAN Linear range is designed specifically for use in hazardous area installations or to retrofit existing fluorescent installations which require high performance, reliable, White-Light illumination.

Housed in marine grade aluminium and using Raytec's field-proven, long-life LED technology, SPARTAN Linear is ATEX and IEC Ex approved for all Zone 1/21 & Zone 2/22 applications (variants also available). SPARTAN Linear's overall dimensions, fixing centres and gland entries are all compatible with traditional Ex 2x18W fluorescent luminaires, so end users can upgrade to LED easily.

- High lumen output LEDs - up to 3,050 lumens (WL84)/6,130 lumens (WL168)
- ATEX and IEC Ex approved – Zone 1/21 - 2/22
- ABS approved
- Variants available
- Retrofitable
- Intelligent Emergency variants - up to 50% light output
- Ultra long life
- Easy installation, maintenance, & inspection
- Wide operating temperature -40° to +55°C



3/8" DRIVE TORQUE WRENCH

This Norbar TTi Torque Wrench is accurate, easy to set, and comfortable to use. It is finished in a durable satin chrome plate with a 3/8" reversible ratchet.

FEATURES

- Accuracy: $\pm 3\%$
- Operates between: 4.00 - 20.00 N·m (0.05 Increment)
- 35.00 - 180.00 lbf-in (0.50 Increment)
- Length: 230 mm
- Square Size: 3/8"
- Ratchet Diameter: 30 mm
- Engagements per Revolution: 72
- Scale Increments (N·m): 0.1
- Scale Increments (lbf-in): 10



Cat No.	Description
TN13831	3/8" DRIVE TORQUE WRENCH 4-20NM

1000V VDE 1/2" DRIVE TORQUE WRENCH

FEATURES

- Torque Range: 5- 50Nm
- Length: 371 mm
- Drive: 1/2"
- 4% accuracy of the taken measurement
- Adjustable through button at the end of the handle
- Slight bend of head when the desired measurement is reached
- IEC 60900:2004, each piece is tested with 10,000V

**1000V
VDE
TOOL**



Cat No.	Description
364492	1000V VDE 1/2" DRIVE TORQUE WRENCH 5-50NM

ADJUSTABLE RATCHET TORQUE WRENCHES

FEATURES

- Push through ratchets with a narrow engagement angle of 5° for working in tight spaces
- Convenient hanger feature for tool storage also aids wrench unlocking and adjustment
- Just eight turns covers entire scale
- Micrometer scale applying to the primary torque units (N·m on a dual scale wrench) for simple and error free setting
- Push/pull lock fast and intuitive, prevents accidental adjustment of set torque
- Light and fast adjustment saves operator time and effort
- Meets requirements of ISO 6789-1:2017

TN130101

- 12.00 - 60.00 Nm
- Square Drive: 3/8" supplied with a 1/2" sq. dr. adaptor
- Ratchet Diameter: 36mm
- Scale Increments (Nm): 0.5

TN130103

- 20.00 - 100.00 Nm
- Square Drive: 1/2" supplied with a 3/8" sq. dr. adaptor
- Ratchet Diameter: 42mm
- Scale Increments (Nm): 1

TN130104

- 40.00 - 200.00 Nm
- Square Drive: 1/2"
- Ratchet Diameter: 45mm
- Scale Increments (Nm): 1

Cat No.	Weight (kg)	Length (mm)
TN130101	0.7	328
TN130103	1/2"	375
TN130104	1/2"	459



KEEP A SAFE DISTANCE

Diameter Measuring Gauge



Auckland

78 Cryers Road
East Tamaki
Auckland
NEW ZEALAND
Ph 0800 442 182
PO Box 39 383
Howick, Auckland

Wellington

10 Petone Ave
Petone
Wellington
NEW ZEALAND
Ph 04 576 2530
PO Box 39 383
Howick, Auckland
NEW ZEALAND
sales@transnet.co.nz

TransNet Tonga

Nuku'alofa

Lakalakaimonu Multi Utility
Complex
Taufa'ahau Road
Poutaha
Nuku'alofa
TONGA
Ph +67 627 939
PO Box 2932
Nuku'alofa
TONGA
transnet@kalianet.to

EVER WONDERED WHAT SIZE THE CONDUCTOR OVERHEAD TRULY IS?

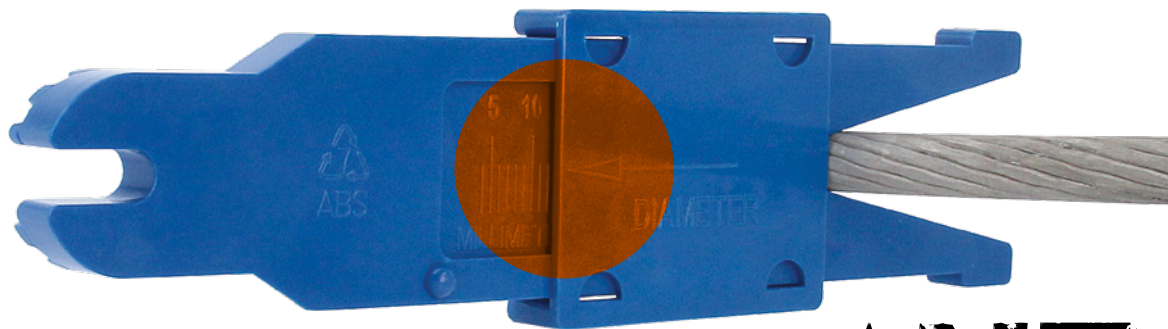
Short of climbing the pole and measuring it with a vernier, or trusting the drawings there was little other option until this came along!

Our R&D department got designing, and the result is a hotstick attachment that can simply and accurately measure conductors from the ground.

The TNWG4/32 is a plastic injection moulded attachment designed to fit on a hotstick. The measurement is taken in mm and includes anything from 4mm to 32mm OD, covering the most common conductor sizes found on New Zealand & Australian Networks.



GAUGE SLIDES TO TAKE MEASUREMENT



Cat No.	Description
TNWG4/32	DIAMETER MEASURING GAUGE 4-32MM OD.



TransNet NZ Ltd has made every reasonable effort to ensure the accuracy of this information and it is to the best of our knowledge correct and reliable. Under no circumstances does this constitute an assurance of any particular quality or performance and users should independently evaluate the suitability of products for their desired application. All information in this publication including pricing, drawings, illustrations, images and graphic designs are reflections of our current understanding. TransNet NZ Ltd reserves the right to make any adjustment to this information at any time. Our liability for the products outlined in this publication is set forth in our standard terms and conditions of trade. In case of any potential ambiguities or questions, please contact us for clarification.

